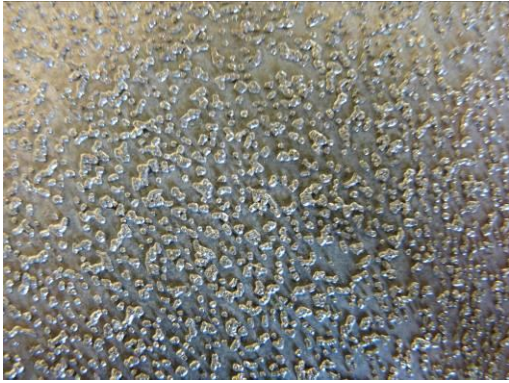


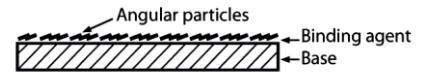


TECHNICAL CHARACTERISTICS



AGRAIN® STAINLESS STEEL SHEET

2 GRAIN SIZES	
CR 100	1.2 mm
CR 80	0.8 mm



Base

Full stainless steel sheet 304L or 306L, thickness 0,8 to 6 mm.

Dimensions

Standard 1000x2000mm, 1250x2500mm
Other dimensions and/or folding can be ordered.

Non slip surface

Angular stainless steel particles, hardness 60 H.R.C.
Particle size : CR80 (0,8mm), CR100 (1,2mm)

Binder

Tin based welding

Laying options

- Indoors
- Outdoors

Key points

Stainless product, non-magnetic product, excellent non-slip properties even on highly-sloping surfaces in the presence of grease deposits, hydrocarbons, various powders etc.
Product resistant in saline, marine or outdoors areas.

Main applications

Industrial floors, factories, workshops, platforms, work podiums, sloping surfaces, access ramps, industrial catwalks, pontoons, stairways, raised sills, emergency stairs, access for persons with reduced mobility, vehicle steps etc.

Technical tests

Friction coefficient*: 0.59 μ d

**measured by the french National Institute of Research and Safety (INRS test report IET/09RI-270/HS December 2009) to prevent workplace accidents and occupational diseases, test conducted in the presence of a lubricating agent (mineral oil)*

Adhesion coefficient measurement* using a pendulum skid resistance tester: from 0.82 to 1.05

**Test in the "Laboratoire Central des Ponts et Chaussée" dated 30/11/2010*

**Made-to-measure possible
Laying over other surfaces.**